

TUESDAY, OCTOBER 28

6:00 a.m. to 11:00 a.m.

Product Show
Marriott Wailea Beach Resort, Aulani Ballroom

6:00 a.m. to 8:00 a.m.

Product Show Breakfast
Marriott Wailea Beach Resort, Aulani Ballroom

6:30 a.m. to 12:00 p.m.

Registration
Pikake Pre-Function

7:30 a.m. to 8:30 a.m.

IFUS Board of Trustees Meeting
Protea

8:00 a.m. to 9:30 a.m.

Spouse Breakfast
Guest Speaker: Caroline Rhea, Stand-Up Comedian and Actress
Haleakala Ballroom

11:00 a.m. to 12:00 p.m.

Testing and Research Institute Meeting
Protea

WEDNESDAY, OCTOBER 29

6:30 a.m. to 7:30 a.m.

Contractor Breakfast
Haleakala Ballroom

6:30 a.m. to 2:00 p.m.

Registration
Pikake Pre-Function

7:30 a.m. to 7:45 a.m.

SMACN-IFUS Contributors' Annual Meeting
Haleakala Ballroom

7:45 a.m. to 8:30 a.m.

SMACNA Annual Business Meeting
Outgoing Board Recognition
New Horizons Foundation Update
Safety Innovation Award
Haleakala Ballroom

8:45 a.m. to 9:45 a.m.

Keynote Presentation
Rebecca Patterson, Investor and Macroeconomic Researcher
Haleakala Ballroom

10:00 a.m. to 11:00 a.m.

Labor Forum
Presenter: Mike Coleman, SMART General President
Moderator: Jason Watson, Executive Director of Labor Relations, SMACNA
Haleakala Ballroom

11:15 a.m. to 12:15 p.m.

EDUCATIONAL SESSIONS

♦ Analog Dinosaurs & Digital Natives: Using Technology to Bridge the Skilled Trades Communication Gap
Devon Madon, Co-Owner, Madon Sheet Metal
Kipp Ivey, Product Specialist, Trimble
Mike Zivanovic, Technical Solutions Executive, Autodesk
Travis Voss, Director of Innovative Technology and Fabrication, SMACNA
Ilima

♦ Sheet Metal for Specialty Hi-Tech Facilities
Jim Megerson, Vice President of Engineering, Design Mechanical
Andy Phelps, Vice President, Barnes & Dodge, Inc.
Pikake

♦ Exit Readiness – Have you Thought About This?
Andrea Steinbrenner, Chief Executive Officer, Exit Consulting Group, Inc.
Hibiscus

♦ Survival Exercise
Guy Gast, Former President, SMACNA; Former President, The Waldinger Corporation
Plumeria

♦ New A2L Refrigerants
Russell Kimball, Owner, Evergreen State Sheet Metal, Inc.
Maile

12:30 p.m. to 1:45 p.m.

President's Lunch
Charity Donation
Contractor of the Year Award
College of Fellows Induction
Announcement of New Officers and Board Members
Haleakala Ballroom

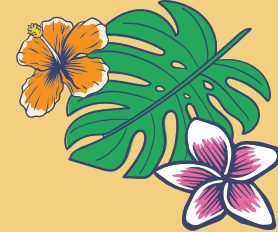
6:30 p.m. to 8:00 p.m.

Closing Dinner
Molokini Garden/Chapel Lawn

8:30 p.m. to 10:00 p.m.

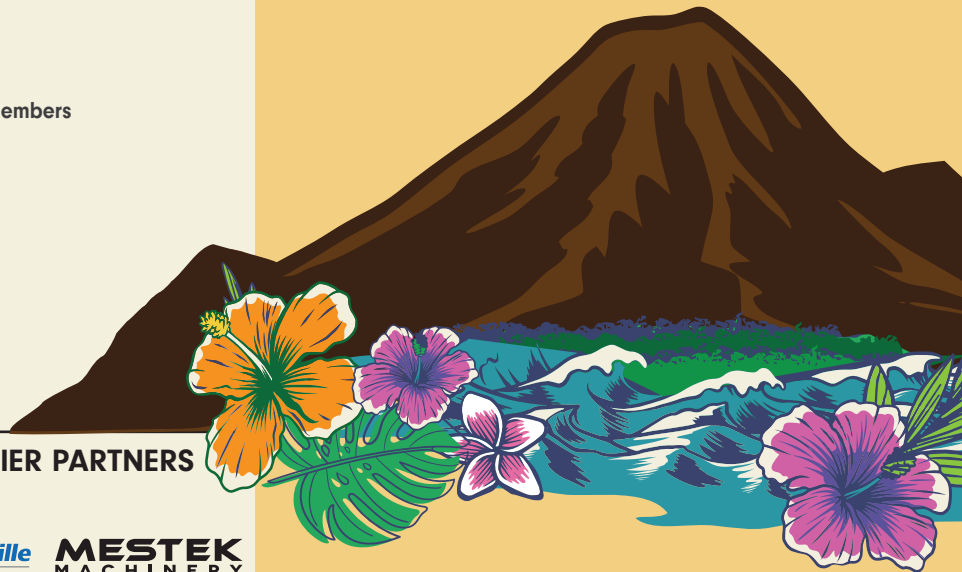
Final Night Entertainment with Chris Daughtry
Haleakala Ballroom

THANK YOU TO OUR PREMIER PARTNERS



2025
SMACNA
ANNUAL CONVENTION

Maui, Hawaii
OCTOBER 26-29



SATURDAY, OCTOBER 25


2:00 p.m. to 6:00 p.m.

Registration

Pikake Pre-Function

Please remember that your 2025 SMACNA Annual Convention badge is required for entry into all SMACNA events.

To get more detailed information about events and speakers, please download the official 2025 SMACNA Annual Convention App by scanning the QR code.



SUNDAY, OCTOBER 26

6:30 a.m. to 8:00 a.m.

College of Fellows Golf Outing Breakfast

Wailea Golf Club

8:00 a.m. to 12:30 p.m.

College of Fellows Golf Tournament

Wailea Golf Club

8:00 a.m. to 5:30 p.m.

Registration

Pikake Pre-Function

10:00 a.m. to 12:00 p.m.

College of Fellows Cornhole Tournament

Molokini Garden

3:30 p.m. to 5:00 p.m.

College of Fellows Meeting

Ilima

6:30 p.m. to 8:00 p.m.

Meet and Greet Reception

Molokini Garden



MONDAY, OCTOBER 27

6:45 a.m. to 7:45 a.m.

Contractor Breakfast

Haleakala Ballroom

7:00 a.m. to 4:00 p.m.

Registration

Pikake Pre-Function

8:00 a.m. to 9:00 a.m.

EDUCATIONAL SESSIONS

- ♦ From Data Empowered to Data Empowered: Building the Future-Ready Contractor

Jeff Sample, CEO and Founder, Iron Man of IT
Joseph Lansdell, President, Poynter Sheet Metal

Robert Atwell, Dir. of Operations, Ernest D. Menold, Inc.

Kevin Gill, Jr., President, McCusker-Gill

Ilima

- ♦ Testing and Balancing (TAB) - Friend or Foe
Douglas Ratley, President, Dynamic Air Solutions

Pikake

- ♦ Blueprints for Success: Building Effective Internship Programs in the Construction Industry
Angie Simon, Co-Founder, Heavy Metal Summer Experience; Former President, SMACNA

Guy Gast, Former President, SMACNA; Former President, The Waldinger Corporation

Chris Gourley, Principal, Hermanson

Bryce Barler, Operations Manager, Southland Industries

Hibiscus

- ♦ SMACNA Technical Standards
Eli P. Howard, III, Executive Director of Technical Services and Research, SMACNA

Geoff Parks, Senior Project Manager of Technical Resources, SMACNA

William C. Farrell II, Senior Project Manager, SMACNA

Plumeria

- ♦ Software Rollouts: Lessons from a Family HVAC Business
Garrett Montrone, Project Manager, Western Sheet Metal

Maile

9:15 a.m. to 10:15 a.m.

EDUCATIONAL SESSIONS

- ♦ Advanced Welding Automation for Construction
Luke Bland, Director of Specialty Metals, Poynter Sheet Metal
Sam Noland, Product Manager, Miller Electric

Ilima

- ♦ Project Prequalification and Maintaining Owner/Job Specific Requirements
Don Campbell, Vice President, P1 Construction

Pikake

- ♦ Shop Layout: From Process to Productivity
Jonathan Marsh, CEO and Technology Strategist, Steel Toe Consulting

Hibiscus

- ♦ Help! I Work With My Family!
Devon Madon, Co-Owner, Madon Sheet Metal

Plumeria

- ♦ The Future of Construction: Bold Ideas & Early Wins
Kris Lengieza, Global Technology Evangelist, Procore Technologies
Charles Davis, Director of Data & Analytics at Modern Niagara

Maile

10:30 a.m. to 11:30 a.m.

EDUCATIONAL SESSIONS

- ♦ Outside Capital's Impact on the Construction Supply Chain
Alice Leung, Principal, Brick & Mortar Ventures
Kaustubh Pandya, Partner and Principal, Brick & Mortar Ventures

Ilima

- ♦ Thou Shalt Labor Plan: A Modern Approach to Efficiency
Ryan Meitl, Co-founder and CEO, RIVET Work

Ken Ahler, COO, Lee Mechanical

Pikake

- ♦ Sheet Metal Manufacturing - Measure What Matters
Jake Olsen, CEO, Stratus
Matthew Cordova, Director of Construction Technology, Hermanson Company

Hibiscus

- ♦ Unlock AI for Efficiency: Practical Solutions for Contractors
Brian Smithwick, Chief Technology Officer and Co-Founder, ServiceTrade

Plumeria

- ♦ Maximizing Your Impact: Strategies for Effective Board Service
Cheryl Sprague, Chapter Executive, SMACNA Sacramento
Gary Myers, Vice President of Marketing and Business, Intech Mechanical

Pansy Romo, Partner, Vice President of Construction, Intech Mechanical

Maile

12:00 p.m. to 1:30 p.m.

- ♦ Keynote Presentation and Lunch
Chapter Executive of the Year Award
Legislative Awards
Labor Relations Award

Keynote Speaker: Col. Nicole Malachowski, USAF, (Ret.)

Haleakala Ballroom

1:45 p.m. to 2:45 p.m.

EDUCATIONAL SESSIONS

- ♦ How Social Media Can Impact Your Business
Cody Shook, Director of Social Media, SMACNA

Ilima

- ♦ You Don't Need Another #@%#!# Project Management Tool!
Graham Corsar, Strategic Account Executive, Trimble, Inc.

Pikake

- ♦ Recruiting & Attracting Gen Z and Retaining Employees
Marie Kumabe, Principal and Owner, Kumabe HR

Hibiscus

- ♦ Politics and Policy
Stan E. Kolbe, Jr, Executive Director of Government and Political Affairs, SMACNA

Denise Murphy McGraw, Special Assistant for Political Affairs, SMACNA

Plumeria

- ♦ Fire Life Safety
Steven Winstead, Representative for the Western Region, National Energy Management Institute (NEMI)
Rallin Harris, Senior Project Manager, Energy Balance & Integration

Maile

8:30 p.m. to 10:00 p.m.

- ♦ After Party with The Luke Bryan Cover Band
Haleakala Ballroom

